



*Arrowhead Nurseries Ltd.*  
Growers of Trees Shrubs & Perennials

---



### **Yellow Ribbon Arborvitae**

*Thuja occidentalis 'Yellow Ribbon'*

Height: 10 feet

Spread: 5 feet

Sunlight: ☉ ●

Hardiness Zone: 3a

Other Names: Eastern White Cedar

#### **Description:**

A compact, upright evergreen shrub featuring dense foliage emerging orange and turning green over the summer; ideal size for small-scale articulation and as a garden color accent, hardy and adaptable; best with some sun, protect from drying winds

#### **Ornamental Features**

Yellow Ribbon Arborvitae is a dwarf conifer which is primarily valued in the landscape or garden for its rigidly columnar form. It has attractive gold evergreen foliage. The scale-like sprays of foliage are highly ornamental and turn an outstanding harvest gold in the fall, which persists throughout the winter.

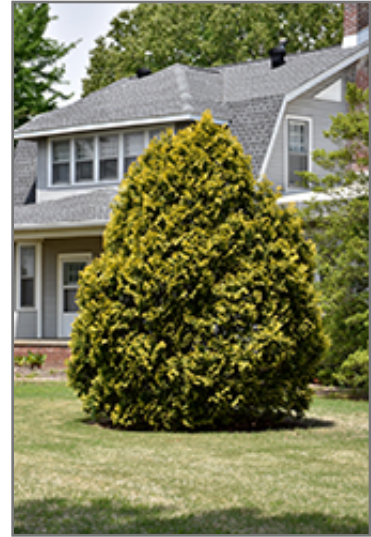
#### **Landscape Attributes**

Yellow Ribbon Arborvitae is a dense multi-stemmed evergreen shrub with a narrowly upright and columnar growth habit. Its relatively fine texture sets it apart from other landscape plants with less refined foliage.

This is a relatively low maintenance shrub. When pruning is necessary, it is recommended to only trim back the new growth of the current season, other than to remove any dieback. It has no significant negative characteristics.

Yellow Ribbon Arborvitae is recommended for the following landscape applications;

- Accent
- Vertical Accent
- Hedges/Screening
- General Garden Use



*Yellow Ribbon Arborvitae*  
Photo courtesy of NetPS Plant Finder



*Yellow Ribbon Arborvitae*  
Photo courtesy of NetPS Plant Finder



*Arrowhead Nurseries Ltd.*  
Growers of Trees Shrubs & Perennials

---

### **Planting & Growing**

Yellow Ribbon Arborvitae will grow to be about 10 feet tall at maturity, with a spread of 5 feet. It tends to fill out right to the ground and therefore doesn't necessarily require facer plants in front, and is suitable for planting under power lines. It grows at a slow rate, and under ideal conditions can be expected to live for approximately 30 years.

This shrub does best in full sun to partial shade. It prefers to grow in average to moist conditions, and shouldn't be allowed to dry out. It is not particular as to soil type or pH. It is somewhat tolerant of urban pollution, and will benefit from being planted in a relatively sheltered location. Consider applying a thick mulch around the root zone in winter to protect it in exposed locations or colder microclimates. This is a selection of a native North American species.



*Yellow Ribbon Arborvitae in fall*  
*Photo courtesy of NetPS Plant Finder*